



Principal's Report

Welcome back to all Osborne Primary School students, staff, and families. It was wonderful to have all the students back last week, enjoying catching up with their teachers and friends. We've had a very positive start to the school year with students quickly settling into their engaging learning environments. Our 'Start Up' Program has been occurring, we then move into introducing our regular learning routines' later this week. I would like to thank everyone for the smooth transition back to school, I hope its been a great start for your child/children.

A special welcome to all our new Prep students in their very first week of school and to all of our new students and families who have relocated to Osborne Primary School in all other year levels. We also wish our Year 6 students a wonderful last year of school! They all look great in their new purple Year 6 polo tops and have been proudly wearing them this week.

There is a lot ahead in our school year, including this term. The calendar on Compass will have the most up to date information regarding events.

New Staff

I would like to welcome Eliza Tatham, Maddy Harvey, Kira May, Kylie Raymer, and Nathan Parker for 2024. I look forward to what they can bring to Osborne PS.

Spotlight Info

SAVE the DATE!

WHOLE SCHOOL PHOTO DAY THURSDAY 7TH MARCH

OSBORNE Vision Statement

OSBORNE Primary fosters a caring, inclusive environment that develops values, attitudes, knowledge and skills in our students that will better equip each student to achieve a meaningful and fulfilling life in our complex, changing world.



Term 1:

Wed 31st January



Thursday 28th March

Osborne Primary School would like to acknowledge the Bunurong People, the Traditional Owners of the land on which we are gathered and pay our respects to the Elders both past, present and emerging.

Facilities update

Over the summer break, a number of jobs have been completed by external contractors or Greg in maintenance. Please see the list below detailing the completed works.

- **Line Marking:** Staff Carpark has been updated with freshly painted lines, with the inclusion of a dedicated disability parking bay.
- **Sink Removal:** Unused sinks in two of the Year 3 portables have been removed, creating additional classroom space.
- **Railing Rectification:** Railings at the rear of the Art room (deck/steps) have been repaired.
- **Soft Fall:** New soft fall has been distributed around the playground areas.
- **Decking:** The decking area at the front of the Zen Garden has been treated and stained.
- **Gym Roof Repairs:** Problematic leaking areas of the Gym roof have been repaired, general maintenance across entire Gym roof completed.
- **Whiteboard tables:** New whiteboard tables are now being used by our students in the new Middle School Building learning space.



'Meet the Teacher' Conferences

In Week 4 (19th to 23rd Feb) "Meet the teacher" conferences will be held throughout the week for our Years 1 – 6 families, with evening meeting times offered on Tuesday (20th) until 6:50pm. The purpose of this 10-minute sessions is for you to inform your child's teacher about your child's learning style, strengths and challenges. It is also a great opportunity to meet the teacher and discuss the year ahead. Bookings will be made via Compass.

Mel Webb will email parents on Monday 12th February with booking details.

(Please note Foundation parent/teacher conferences will be held at a later date in the term).

School assemblies

This year, our school assemblies will once again be held on Friday afternoons at 2:30pm with the first one scheduled for tomorrow. Next week (16/2) assembly will be at an earlier time of 2:15pm (see details below). We are hoping to hold some of our Term 1 assemblies on the blue court and all parents are welcome to attend.

Student Leaders

We will be presenting the nominated Year 6 student leaders with their Leadership Badges at next week's assembly (Friday 16th February) at 2:15pm (earlier than our normal 2:30pm start time).

Rylan Wooster

Congratulations to Rylan for his outstanding performance at the Little Athletics State Combined Event! Competing against 72 Under 9 kids from all over Victoria at Albert Park during the holidays. Facing five challenging events – long jump, discuss, 100m, 70m Hurdles, and 800m – he accumulated points in each discipline, ultimately securing a well-deserved silver medal, marking him as the 2nd best in the state in his age group. Additionally, he also scored victories at the U9 Rye Gift 100m race and the Mornington Open Day combined event the week before. Congratulations, Rylan, on your impressive accomplishments and well-deserved success!



Year Level Curriculum Information booklets (Foundation - Year 6)

Each year the school creates a year level handbook. These documents include information on classroom structures and processes, curriculum, homework, and other important information. Families will also be able to ask questions during our 'Meet the Teacher' conferences in week 4. The year level handbook will be available for families to access before these meetings on Compass.

Start of school day

A reminder for everyone that the school day starts at 9am and finishes at 3.15pm. Classrooms open at 8:50am so students can enter the classroom and get ready for the day and speak to the teacher before instruction starts at 9am. The start of the day is very important as the daily schedule for learning is outlined to students, with learning activities beginning promptly at 9am.

Communication

Keeping parents informed about the happenings around school is very important to us as we believe it helps strengthen the partnership between home and school. Compass is the system we use across the school where we can send SMS or notification messages directly to parents' mobile phones or an email to the parent's email address. We **strongly** recommend parents download the Compass app, available in your mobile phone's app store.

SunSmart

We are fortunate that the weather was not too hot last week and early this week. Our SunSmart Policy, available on the school's website, is developed to ensure children are safe whilst outside. Please remember that part of this is to wear a broad-rim hat during Term 1 and Term 4. Please ensure your child has a hat, which is clearly named so it can be returned if it gets lost. In the meantime, students without hats will be directed to stay under the shaded area. Next week children without hats will need to be inside at break times. Your support with this is appreciated.

Uniform and uniform shop

I have been very pleased with how everyone is presenting in full school uniform. Our students look fantastic in their uniform. Please remember that only black or white shoes are part of the uniform, and black, green, or white socks (with no labels or logos).

A reminder that our school uniform provider is Fashion clubwear. We have an onsite shop that is located at the rear of the library/Year 1 building. This store is open twice a week (Monday from 1:30pm to 4pm and Friday from 8:30am to 11am). Information on the uniform policy and prices can be found on our school website www.osborneps.vic.gov.au

Second hand clothing

We are always in need of pre-loved uniforms to help fill our second-hand shelves. If you have any uniforms at home, that you no longer require, we would love for you to donate them. Osborne operates this as a valuable service to our community. These items of clothing are an affordable option for parents to purchase additional uniforms. It is a sustainable way to solve a problem as it reuses the MANY unnamed items of uniform that collect at school, and it also allows us to support students and families who need it. The items are washed and sell for \$5 each piece of clothing. Each term, around week 5, we have a second-hand stall. The time and location are advertised in the newsletter or ask at the office for these dates.

Canteen

Mamas in the Kitchen have a new service coming to the canteen. *Excursion Lunch Packs* will now be available for most full day excursions away from the school. The packs start from \$9.00 and will include a sandwich, cookie, piece of seasonal fruit and a drink.

All orders will close 2 days before the excursion to allow for the preparation of the packs. They will be labelled and packed on the bus ready to be given to your child at eating time. The first Lunch Packs will be Live on the Flexischools App soon and will be available to order for the Water Safety Excursion's commencing on the 19th of February so keep a look out.

Parking

We urge all of our families to please take note of the parking signage particularly outside the school along Dunns Road. The "Kiss & Go" zone is a 2-minute standing only zone. Parents may drop off their children here, however, must not leave their car unaccompanied in the "Kiss & Go" zone.

Please do not park in the turning circle at the end of Dunns Road.

Personal Property

Principals have been requested by DET to remind staff members, students, and parents/guardians that "personal property brought onto school premises is done so with the knowledge that DET insurances will not cover any loss or damage to such property, therefore staff members, students, parents/guardians are discouraged from bringing unnecessary or particular valuable items to school."

We request students do not bring expensive items and toys to school to use during their breaks. We cannot guarantee these items will not be damaged or lost. We also encourage our students to play active and imaginative games with their peers during their breaks.

Parents are reminded that the Department does not provide personal accident insurance or ambulance cover for students. Parents and guardians of students, who do not have student accident insurance/ambulance cover, are responsible for paying the cost of medical treatment for injured students, including the cost of ambulance attendance or transport as well as any other transport costs.

Bikes/Scooter

A bike shed is provided for bikes and scooter from 9.00 – 3.15 pm each day. **The school and DET take no responsibility for bikes/ scooters left in the bike shed outside of these times.** If they need to be held in this area outside of these times, we recommend using a bike lock. Rollerblades and skateboards are not permitted. Insurance of bikes and scooters is the responsibility of parents. We strongly encourage insurance in the light of a number of schools reporting thefts. Helmets are compulsory by law of the State of Victoria. Children will not be permitted to ride bikes if they do not have helmets. Bikes and scooters must not be ridden in the school or on pedestrian crossings to ensure safety. Riding bikes/scooters in the school yard before and after school is not permitted for safety reasons.

Privacy

This is just a quick reminder that access to the Department of Education and Training (DET) Schools' Privacy Policy is available through the following link.

<https://www.education.vic.gov.au/Pages/schoolsprivacypolicy.aspx>

This policy is updated regularly and is of great assistance as we support our students to navigate through an ever-changing technological world. Please refer to the policy as needed.

Friends of Osborne (FOS) membership, morning tea and AGM (Parent association)

The FOS group works in partnership with the school leadership team, staff, and school council. Their aim is to promote and encourage parents to become active in the school, helping build a strong relationship between families and the school.

The FOS group meets throughout the year and all parents are invited to join and welcome to attend the monthly meetings. FOS undertakes numerous social and fundraising activities throughout the year. These events and efforts serve to bring the school community together as well as to fundraise. Funds raised are used for educational and recreational needs as identified through consultation with parents, school council and school leadership.

The FOS team is holding a morning tea to welcome our Foundation and any other parents who are thinking about joining the FOS group. Any current families who are interested in learning more about what the FOS team do are also invited to come along for a chat and coffee. The morning tea will be held on Tuesday 20th February 9.30am - 10.00am (following our Prep's 10 days of school event) in the staffroom.

I hope we see some new parents at the morning tea.

Following the morning tea, the FOS will then have their first "official" meeting for the year at 10am in the staffroom for their Annual General Meeting. At this meeting the Leadership positions (President, Vice President, Treasurer, Secretary) are finalised. There will be some vacancies in these roles for 2024. Anyone interested in applying can contact me for further information.

School Council Elections 2024

Would you like to be a member of our school council?

School Council meets twice a term (8 times during the year). The meetings are held on Thursday evenings starting at 6.30pm and conclude by 8.30pm.

We currently have four parent vacancies and one DET vacancy (staff) for our school council. If you are an enthusiastic parent interested in getting more involved and having a say in what our school is doing, or know someone who is, we would love to hear from you. We are looking for people who are committed to work with the school in this important role. Parents find their involvement satisfying and may also find that their children feel a greater sense of belonging.

Nominations are now open and close on Thursday 15th February at 4.00pm and forms are available from school reception.

School Council election process and timetable for Osborne Primary School:

Event	Date
a) Notice of election and call for nominations	Thursday 8 th February
b) Closing date for nominations	Thursday 15 th February at 4pm
c) Date by which the list of candidates and nominators will be posted (if needed)	Monday 19 th February
d) Date by which ballot papers will be prepared and distributed (if needed)	On or before Thursday 22 nd February
e) Close of ballot (if needed)	Thursday 7 th March at 4pm.
f) Vote count (if needed)	Friday 8 th March
g) Declaration of poll (if needed)	Monday 11 th March
h) Special council meeting to co-opt community members (the principal will preside)	Thursday 21 st March
i) First council meeting to elect office bearers (the principal will preside)	Thursday 21 st March

Lastly

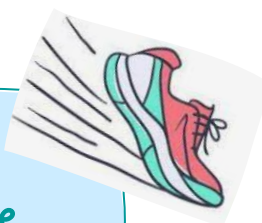
I hope everyone has a great start to the year. It has been wonderful to see the students so settled and engaged as they work together. Let's hope this continues for the year! If you see me on the gate in the morning or afternoon, please say "Hi".

Brett Miller
Principal

OPS Running Club

Running club will be starting this Thursday 8th February.

Please join Mrs. Miles in the Gym on Thursday mornings at 8.30am for some running fun!



Please contact the office on 59756 1792, or pop in to see us if you would like any further information or assistance with State School Relief.

About Us

State Schools' Relief is unique. No other Australian state or territory has a similar organisation.

Since 1930, State Schools' Relief has been providing anonymous support so that students receiving our assistance can do so with dignity. It's our belief that every student deserves the opportunity to participate in their education without barriers.

Who are we?

State Schools' Relief is a Victorian not-for-profit organisation that supports the needs of disadvantaged government school students by providing new school uniforms, school shoes and a host of other essential educational resources, including learning devices.

Our simple and practical service ensures that all students can attend school in warmth and comfort with a greater sense of belonging and improved self-esteem, which in turn assists students to engage in their learning and strengthen their educational outcomes.



How we help

Issues such as poverty, neglect, unemployment, health issues/ illness, financial hardship, bereavement, domestic violence, homelessness, and natural disasters continue to affect many Victorian families. We work side by side with all Victorian primary, secondary, specialist and language schools to ensure that any students facing hardship have the necessary items they require for school.



Do you need assistance?

State Schools' Relief provides support to any Victorian student attending a government school, on the advice of the school.

If you are a parent or carer and you need financial assistance with your child's government education, please make an appointment with the school principal, assistant principal, or welfare/wellbeing coordinator to discuss your situation.

State Schools' Relief | 1/8 Johnston Court, Dandenong South VIC 3175 | PO Box 4528, Dandenong South VIC 3164
03 8769 8400 | contact@ssr.net.au | www.stateschoolsrelief.org.au | ABN: 77 455 214 193





We are looking forward to another fun year working with the Y3 and Y4s and volunteers in 2024.

During the holidays we kept an eye on the garden. We preserved some of the produce to use during the year. Green tomato relish, stewed plums, stewed rhubarb, and tomato passata sauce.

In term one we will introduce the students to:

- The importance of hygiene, and safety.
- Allowing students to become familiar with the garden and the kitchen, including working towards their knife and wheel borough license.
- Cooking and tasting meals prepared by them - using produce they grow and harvest from the garden.

See you in the garden and kitchen soon!



FINANCIAL ASSISTANCE INFORMATION FOR PARENTS

Every Victorian child should have access to the world of learning opportunities that exist beyond the classroom. The Camps, Sports and Excursions Fund helps ensure that no student will miss out on the opportunity to join their classmates for important, educational, and fun activities. It is part of making Victoria the Education State and the Government's commitment to breaking the link between a student's background and their outcomes.

CAMPS, SPORTS & EXCURSIONS FUND (CSEF)

School camps provide children with inspiring experiences in the great outdoors. Excursions encourage a deeper understanding of how the world works while sports teach teamwork, discipline and leadership. All are a part of a healthy curriculum.

CSEF is provided by the Victorian Government to assist eligible families to cover the costs of school trips, camps and sporting activities.

If you hold a valid means-tested concession card or are a temporary foster parent, you may be eligible for CSEF. A special consideration category also exists for asylum seeker and refugee families. The allowance is paid to the school to use towards expenses relating to camps, excursions or sporting activities for the benefit of your child.

The annual CSEF amount per student is:

- \$150 for primary school students
- \$250 for secondary school students

MORE INFORMATION

For more information about CSEF visit:

<https://www.education.vic.gov.au/about/programs/Pages/csef.aspx>

HOW TO APPLY

New applicants should contact the school office to obtain a CSEF application form or download from the website below.

If you applied for CSEF at your child's school last year, you do not need to complete an application form this year unless there has been a change in your family circumstances.

You only need to complete an application form if any of the following changes have occurred:

- **new student enrolments;** your child has started or changed schools this year.
- **changed family circumstances;** such as a change of custody, change of name, concession card number, or new siblings commencing this year.

Check with the school office if you are unsure.





GROUND BREAKERS

GIRLS ONLY!

TAKE YOUR GAME TO THE NEXT LEVEL!

WEDNESDAYS
4:00PM - 4:55PM

31/01/24 - 27/03/24

DOMESTIC PLAYERS BORN 2011 - 2016

VENUE: MORNINGTON BASKETBALL

STADIUM

COST: \$130.00



<https://www.morningtonbasketball.com.au/ground-breakers/>

 Bendigo Bank



**GET A JUMPSTART ON YOUR
BASKETBALL JOURNEY!**



**MONDAYS + THURSDAYS
4:10PM - 4:55PM**

**MONDAYS
29/01/24 - 25/03/24**

**THURSDAYS
01/02/24 - 28/03/24**

PLAYERS BORN 2015 - 2019

COST: \$130.00

MUST BE 5 YEARS OLD TO COMMENCE PROGRAM

**MORNINGTON BASKETBALL STADIUM
1051 NEPEAN HIGHWAY MORNINGTON
FOR MORE INFORMATION AND TO REGISTER
VISIT OUR WEBSITE**

WWW.MORNINGTONBASKETBALL.COM.AU/JUMP-BALL/



**AN INVITATION TO OUR
OPEN NIGHT 2024**

JOIN THE ADVENTURE- ADULTS IN SCOUTING
1st Mornington Scout Hall, Mitchell Reserve, Mornington,
Wednesday 2nd February, 6.30pm to 8.00pm

WELCOME ONE AND ALL

Open to all our scouting families and the wider community, join us for supper and discover the opportunities to get involved in scouting in your community. We are looking to grow our numbers in cubs and scouts and possible open new sections. Learn more from Scouts Victoria and our own members how scouting is not just for the children!



School Sport Victoria Team Online Registration Process.

12 Years and Under

Registration for trials are now open for both boys and girls teams in all the following sports:

AFL, Cricket, Golf, Netball, Soccer

Hockey, Rugby, Softball and Basketball

The SSV website www.ssv.vic.edu.au provides important information and a video on the process as well as application forms and must be visited.

Key points include:

1. Parents must consult with their Sport Teacher/Coordinator at the school to ensure their child has a high skill level to trial and represent their school.
2. It is imperative that teachers will decide on your child's capability of representing their school at a state level **before** registering online.
3. This discussion with the school Sport Teacher is necessary as all students **MUST** get the Sport Teacher/Coordinator and the Principal signature on their registration form prior to attending a trial.
4. The Eventbrite ticket, application form signed by the Principal and Sport Teacher/Coordinator and proof of payment must be handed to the Division Trial Coordinator on the day of the trial.
5. Applicants will be notified of arrangements for the Division trial once registrations have closed.

Note: Registrations close 11.59pm, Friday 1st March 2024

<https://www.ssv.vic.edu.au/team-vic>

RITCHIES **IGA** + LIQUOR



RITCHIES CARD WELCOME OFFER



- 1 Join and activate your Ritchies Card or App.
- 2 Visit a store within 14 days, spend \$100* or more in a single transaction and scan your Ritchies Card or App.
- 3 **Get \$10 off instantly.** Valid for one transaction.



Download the Ritchies Card App and select the club, school or charity that you wish to support.



*Terms & Conditions apply. See ritchies.com.au for details. Excluding cigarette & tobacco products, gift cards, electronic recharge and items marked reduced to clear. Liquor can be used to obtain the discount.

Find your own home Hedwig!



Powerful Owl photographed in The Briars by Nick Carter.



Printed on recycled paper

SAVE THE BRIARS WILDLIFE

Harry Potter™: A Forbidden Forest Experience is to be held inside the fenced Briars Wildlife Sanctuary.

Up to 200,000 fans (3,000 per night) will enter this conservation area on most nights, throughout April-July 2024.

Endangered animals and sensitive bushland will suffer.

A sanctuary is not an entertainment venue!



PETITION

PLEASE SIGN OUR PETITION TO URGE MORNINGTON PENINSULA SHIRE COUNCIL TO RELOCATE THIS EVENT TO ANOTHER VENUE.



WEBSITE

Keen to help? Visit our website to find out how.

www.savebriarssanctuary.com

We acknowledge the Traditional Owners and Custodians of this land, the Bunurong People, and pay respect to their Elders past, present and emerging. We recognise and respect their continuing connections to climate, culture and country.



AUSTRALIAN CAMPS ASSOCIATION
PEOPLE OUTDOORS
Adventure for all



PEOPLE OUTDOORS

CAMPS FOR PEOPLE LIVING WITH DISABILITY

Adventure for All!



AUSTRALIAN CAMPS ASSOCIATION
PEOPLE OUTDOORS
Adventure for all



- Overnight Camps
- Weekend Camps
- School Holiday Camps



All meals, activities, transport and accommodation included. Central pick up point.



We are a Registered NDIS Service Provider.



Kids, teens and adults welcome.



Campers supported by professional staff.

30 years experience!

**Call today to find out more:
Head Office - 03 9863 6824**



Scan to complete Referral Form to join us on camp!



www.peopleoutdoors.org.au

This flyer has been printed on recycled stock.



Frankston
Monday Mornings
9.45am - Midday

Why MyTime?

MyTime is for parents and carers of a child with a disability, chronic medical condition or other additional needs including developmental delay.

Unwind and
share experiences
with others who
understand

FIND US AT:

BAM Arts Inc
1 Rosella Street
Frankston

CONTACT:

Facilitator: Sue Batcheler
Phone: 0413 655 659
Email: suzanneb@mytimevic.com.au



mytime.net.au